

# Cynomolgus NCR3LG1(B7-H6) Protein; His Tag

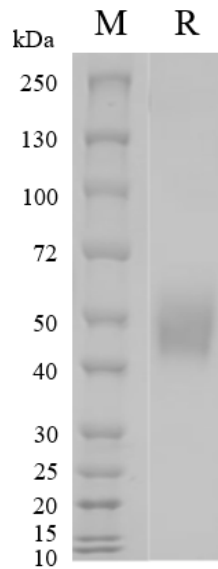
## Product Information

<b>Product Name</b>	Cynomolgus NCR3LG1(B7-H6) Protein; His Tag
<b>Storage temp.</b>	Store at $\leq -70^{\circ}\text{C}$ , stable for 6 months after receipt. Recommend to aliquot the protein into smaller quantities for optimal storage. Please minimize freeze-thaw cycles.
<b>Catalog# / Size</b>	<b>GM-87649RP-100 / 100 <math>\mu\text{g}</math></b> <b>GM-87649RP-1000 / 1 mg</b>

## Protein Information

<b>Alternative Names</b>	B7-H6,NCR3LG1, B7H6,B7 Homolog 6
<b>Source</b>	Cynomolgus NCR3LG1(B7-H6) Protein; His Tag (GM-87649RP) is expressed from human 293 cells (HEK-293). It contains AA Asp 25 - Asp 259 (Accession # XP_005578557.1). This protein carries a His tag at the C-terminus.
<b>Purity</b>	> 95% as determined by SDS-PAGE
<b>Endotoxin</b>	< 1 EU/ $\mu\text{g}$ , determined by LAL gel clotting assay
<b>Predicted Mol Mass</b>	26.6 KDa
<b>Formulation</b>	Supplied as a 0.2 $\mu\text{m}$ filtered solution of PBS, pH7.4.
<b>Description</b>	<p>B7-H6 protein is a co-stimulatory molecule that belongs to the B7 family. It is encoded by the NCR3LG1 gene and is a protein associated with the human immune system. B7-H6 protein was initially discovered in human tumor cells and later detected in other tissues and cells.</p> <p>B7-H6 protein regulates the activity of NK cells (natural killer cells) by binding to the NKP30 receptor on the surface of NK cells. NK cells are an important type of lymphocyte with the ability to directly kill tumor cells and infected cells, making them crucial members of the immune system.</p> <p>Research indicates that B7-H6 protein plays a significant role in regulating the activity of NK cells, promoting cytotoxicity, and modulating immune responses. Additionally, the expression of B7-H6 protein is associated with tumor development and immune evasion, making it a potential target for immunotherapy.</p>

## SDS-PAGE

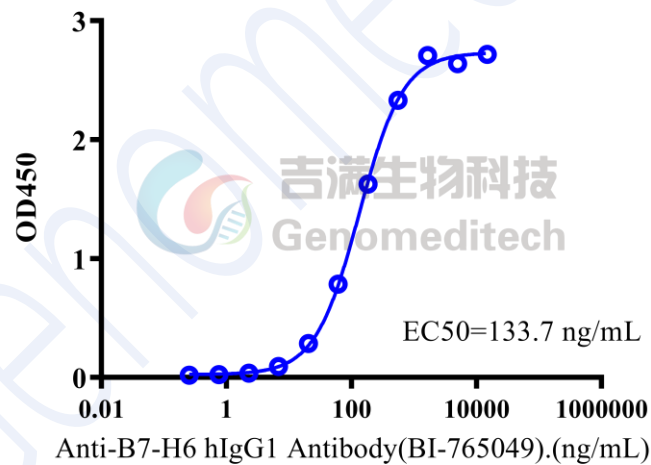


On SDS-PAGE under reducing (R) condition. The gel was stained overnight with Coomassie Blue. The purity of the protein is greater than 95%.

## Bioactivity-ELISA

### Bioactivity-ELISA

0.1  $\mu\text{g}$  Cynomolgus NCR3LG1(B7-H6) Protein; His Tag of per well



Cynomolgus NCR3LG1(B7-H6) Protein; His Tag (Catalog # GM-87649RP) was immobilized at 1  $\mu\text{g}/\text{ml}$  (100  $\mu\text{L}/\text{well}$ ). Increasing concentrations of Anti-B7-H6 hIgG1 Antibody (BI-765049) (Catalog # GM-86750AB) were added.